

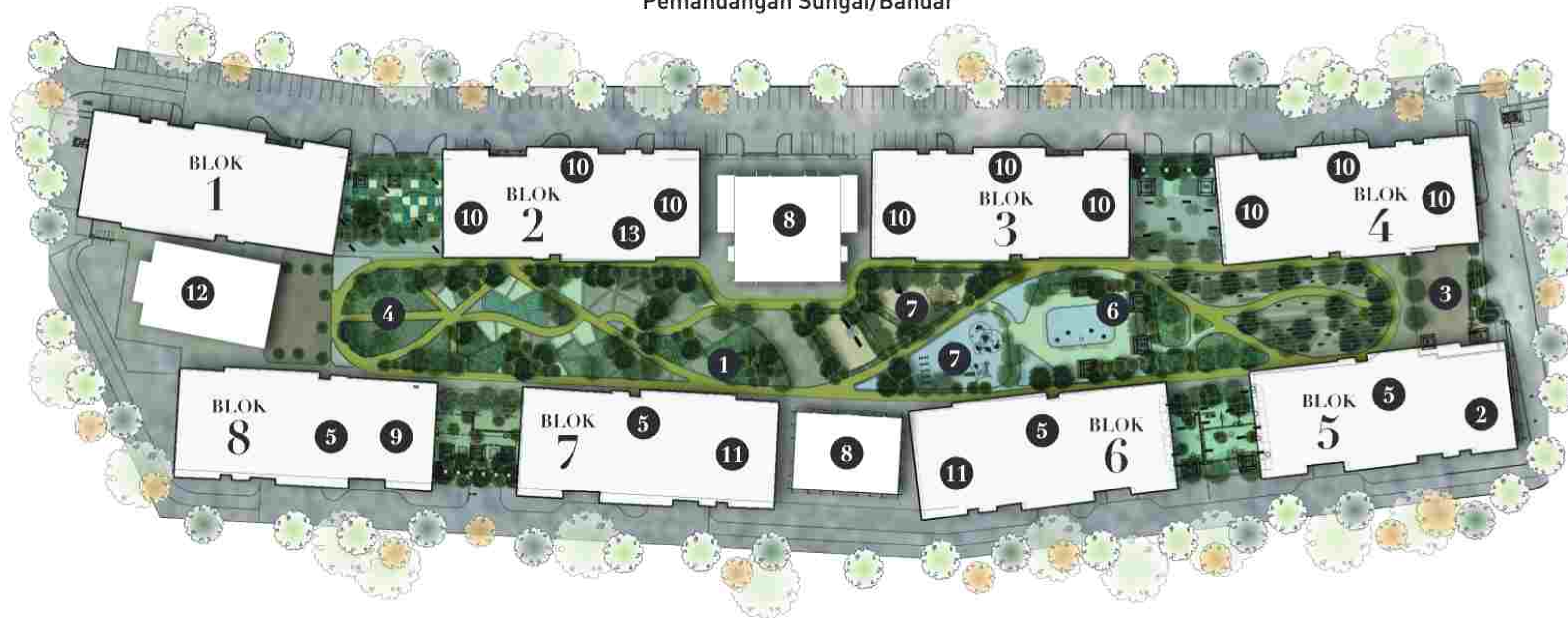
RESIDENSI

SEREMBAN SENTRAL



PELAN FASILITI
ARAS 6

Pemandangan Sungai/Bandar



Pemandangan Bukit

PETUNJUK

- | | |
|-----------------------------|-----------------------|
| ① Taman Sentral | ⑧ Dewan Serbaguna |
| ② Tempat Gimnasium | ⑨ Tempat Perpustakaan |
| ③ Dek Rekreasi | ⑩ Lot Kedai |
| ④ Trek Jogging | ⑪ Taska |
| ⑤ Tadika | ⑫ Surau |
| ⑥ Pementasan Air Interaktif | ⑬ Dobi |
| ⑦ Taman Permainan | |

PELAN ARAS (UMUM)





RESIDENSI
**SEREMBAN
SENTRAL**

**PELAN TAPAK
BLOK 1**



ARAS	Unit 10	Unit 8	Unit 6	Unit 4	Unit 2	Unit 1	Unit 3	Unit 5	Unit 7	Unit 9
ARAS 25	M1-25-10 Type C	M1-25-8 Type A1	M1-25-6 Type B (M)	M1-25-4 Type B	M1-25-2 Type C 1	M1-25-1 Type C	M1-25-3 Type A	M1-25-5 Type B	M1-25-7 Type B (M)	M1-25-9 Type C (M)
ARAS 24	M1-24-10 Type C	M1-24-8 Type A1	M1-24-6 Type B (M)	M1-24-4 Type B	M1-24-2 Type C 1	M1-24-1 Type C	M1-24-3 Type A	M1-24-5 Type B	M1-24-7 Type B (M)	M1-24-9 Type C (M)
ARAS 23	M1-23-10 Type C	M1-23-8 Type A1	M1-23-6 Type B (M)	M1-23-4 Type B	M1-23-2 Type C 1	M1-23-1 Type C	M1-23-3 Type A	M1-23-5 Type B	M1-23-7 Type B (M)	M1-23-9 Type C (M)
ARAS 22	M1-22-10 Type C	M1-22-8 Type A1	M1-22-6 Type B (M)	M1-22-4 Type B	M1-22-2 Type C 1	M1-22-1 Type C	M1-22-3 Type A	M1-22-5 Type B	M1-22-7 Type B (M)	M1-22-9 Type C (M)
ARAS 21	M1-21-10 Type C	M1-21-8 Type A1	M1-21-6 Type B (M)	M1-21-4 Type B	M1-21-2 Type C 1	M1-21-1 Type C	M1-21-3 Type A	M1-21-5 Type B	M1-21-7 Type B (M)	M1-21-9 Type C (M)
ARAS 20	M1-20-10 Type C	M1-20-8 Type A1	M1-20-6 Type B (M)	M1-20-4 Type B	M1-20-2 Type C 1	M1-20-1 Type C	M1-20-3 Type A	M1-20-5 Type B	M1-20-7 Type B (M)	M1-20-9 Type C (M)
ARAS 19	M1-19-10 Type C	M1-19-8 Type A1	M1-19-6 Type B (M)	M1-19-4 Type B	M1-19-2 Type C 1	M1-19-1 Type C	M1-19-3 Type A	M1-19-5 Type B	M1-19-7 Type B (M)	M1-19-9 Type C (M)
ARAS 18	M1-18-10 Type C	M1-18-8 Type A1	M1-18-6 Type B (M)	M1-18-4 Type B	M1-18-2 Type C 1	M1-18-1 Type C	M1-18-3 Type A	M1-18-5 Type B	M1-18-7 Type B (M)	M1-18-9 Type C (M)
ARAS 17	M1-17-10 Type C	M1-17-8 Type A1	M1-17-6 Type B (M)	M1-17-4 Type B	M1-17-2 Type C 1	M1-17-1 Type C	M1-17-3 Type A	M1-17-5 Type B	M1-17-7 Type B (M)	M1-17-9 Type C (M)
ARAS 16	M1-16-10 Type C	M1-16-8 Type A1	M1-16-6 Type B (M)	M1-16-4 Type B	M1-16-2 Type C 1	M1-16-1 Type C	M1-16-3 Type A	water tank	sky garden	M1-16-9 Type C (M)
ARAS 15	M1-15-10 Type C	M1-15-8 Type A1	M1-15-6 Type B (M)	M1-15-4 Type B	M1-15-2 Type C 1	M1-15-1 Type C	M1-15-3 Type A	M1-15-5 Type B	M1-15-7 Type B (M)	M1-15-9 Type C (M)
ARAS 14	M1-14-10 Type C	M1-14-8 Type A1	M1-14-6 Type B (M)	M1-14-4 Type B	M1-14-2 Type C 1	M1-14-1 Type C	M1-14-3 Type A	M1-14-5 Type B	M1-14-7 Type B (M)	M1-14-9 Type C (M)
ARAS 13	M1-13-10 Type C	M1-13-8 Type A1	M1-13-6 Type B (M)	M1-13-4 Type B	M1-13-2 Type C 1	M1-13-1 Type C	M1-13-3 Type A	M1-13-5 Type B	M1-13-7 Type B (M)	M1-13-9 Type C (M)
ARAS 12	M1-12-10 Type C	M1-12-8 Type A1	M1-12-6 Type B (M)	M1-12-4 Type B	M1-12-2 Type C 1	M1-12-1 Type C	M1-12-3 Type A	M1-12-5 Type B	M1-12-7 Type B (M)	M1-12-9 Type C (M)
ARAS 11	M1-11-10 Type C	M1-11-8 Type A1	M1-11-6 Type B (M)	M1-11-4 Type B	M1-11-2 Type C 1	M1-11-1 Type C	M1-11-3 Type A	M1-11-5 Type B	M1-11-7 Type B (M)	M1-11-9 Type C (M)
ARAS 10	M1-10-10 Type C	M1-10-8 Type A1	M1-10-6 Type B (M)	M1-10-4 Type B	M1-10-2 Type C 1	M1-10-1 Type C	M1-10-3 Type A	M1-10-5 Type B	M1-10-7 Type B (M)	M1-10-9 Type C (M)
ARAS 9	M1-9-10 Type C	M1-9-8 Type A1	M1-9-6 Type B (M)	M1-9-4 Type B	M1-9-2 Type C 1	M1-9-1 Type C	M1-9-3 Type A	M1-9-5 Type B	M1-9-7 Type B (M)	M1-9-9 Type C (M)
ARAS 8	M1-8-10 Type C	M1-8-8 Type A1	M1-8-6 Type B (M)	M1-8-4 Type B	M1-8-2 Type C 1	M1-8-1 Type C	M1-8-3 Type A	M1-8-5 Type B	M1-8-7 Type B (M)	M1-8-9 Type C (M)
ARAS 7	M1-7-10 Type C	M1-7-8 Type A1	M1-7-6 Type B (M)	M1-7-4 Type B	M1-7-2 Type C 1	M1-7-1 Type C	M1-7-3 Type A	M1-7-5 Type B	M1-7-7 Type B (M)	M1-7-9 Type C OKU
ARAS 6	Facilities									
ARAS 5	Podium Car parking level 5									
ARAS 4	Podium Car parking level 4									
ARAS 3	Podium Car parking level 3									
ARAS 2	Podium Car parking level 2									
ARAS 1	Podium Car parking level 1 / drop off entrance									



ARAS 7



ARAS 16



ARAS 8, 9, 10, 11, 12, 13, 14, 15, 17, 18, 19, 20, 21, 22, 23, 24, 25



RESIDENSI
**SEREMBAN
SENTRAL**

**PELAN TAPAK
BLOK 2**

PETUNJUK

● TYPE A1

ARAS	Unit 2	Unit 4	Unit 6	Unit 8	Unit 10	Unit 9	Unit 7	Unit 5	Unit 3	Unit 1
ARAS 25	M2-25-2 Type C 1 (M)	M2-25-4 Type B (M)	M2-25-6 Type B	M2-25-8 Type A1 (M)	M2-25-10 Type C (M)	M2-25-9 Type C	M2-25-7 Type B	M2-25-5 Type B (M)	M2-25-3 Type A (M)	M2-25-1 Type C (M)
ARAS 24	M2-24-2 Type C 1 (M)	M2-24-4 Type B (M)	M2-24-6 Type B	M2-24-8 Type A1 (M)	M2-24-10 Type C (M)	M2-24-9 Type C	M2-24-7 Type B	M2-24-5 Type B (M)	M2-24-3 Type A (M)	M2-24-1 Type C (M)
ARAS 23	M2-23-2 Type C 1 (M)	M2-23-4 Type B (M)	M2-23-6 Type B	M2-23-8 Type A1 (M)	M2-23-10 Type C (M)	M2-23-9 Type C	M2-23-7 Type B	M2-23-5 Type B (M)	M2-23-3 Type A (M)	M2-23-1 Type C (M)
ARAS 22	M2-22-2 Type C 1 (M)	M2-22-4 Type B (M)	M2-22-6 Type B	M2-22-8 Type A1 (M)	M2-22-10 Type C (M)	M2-22-9 Type C	M2-22-7 Type B	M2-22-5 Type B (M)	M2-22-3 Type A (M)	M2-22-1 Type C (M)
ARAS 21	M2-21-2 Type C 1 (M)	M2-21-4 Type B (M)	M2-21-6 Type B	M2-21-8 Type A1 (M)	M2-21-10 Type C (M)	M2-21-9 Type C	M2-21-7 Type B	M2-21-5 Type B (M)	M2-21-3 Type A (M)	M2-21-1 Type C (M)
ARAS 20	M2-20-2 Type C 1 (M)	M2-20-4 Type B (M)	M2-20-6 Type B	M2-20-8 Type A1 (M)	M2-20-10 Type C (M)	M2-20-9 Type C	M2-20-7 Type B	M2-20-5 Type B (M)	M2-20-3 Type A (M)	M2-20-1 Type C (M)
ARAS 19	M2-19-2 Type C 1 (M)	M2-19-4 Type B (M)	M2-19-6 Type B	M2-19-8 Type A1 (M)	M2-19-10 Type C (M)	M2-19-9 Type C	M2-19-7 Type B	M2-19-5 Type B (M)	M2-19-3 Type A (M)	M2-19-1 Type C (M)
ARAS 18	M2-18-2 Type C 1 (M)	M2-18-4 Type B (M)	M2-18-6 Type B	M2-18-8 Type A1 (M)	M2-18-10 Type C (M)	M2-18-9 Type C	M2-18-7 Type B	M2-18-5 Type B (M)	M2-18-3 Type A (M)	M2-18-1 Type C (M)
ARAS 17	M2-17-2 Type C 1 (M)	M2-17-4 Type B (M)	M2-17-6 Type B	M2-17-8 Type A1 (M)	M2-17-10 Type C (M)	M2-17-9 Type C	M2-17-7 Type B	M2-17-5 Type B (M)	M2-17-3 Type A (M)	M2-17-1 Type C (M)
ARAS 16	M2-16-2 Type C 1 (M)	M2-16-4 Type B (M)	M2-16-6 Type B	M2-16-8 Type A1 (M)	M2-16-10 Type C (M)	M2-16-9 Type C	sky garden	water tank	M2-16-3 Type A (M)	M2-16-1 Type C (M)
ARAS 15	M2-15-2 Type C 1 (M)	M2-15-4 Type B (M)	M2-15-6 Type B	M2-15-8 Type A1 (M)	M2-15-10 Type C (M)	M2-15-9 Type C	M2-15-7 Type B	M2-15-5 Type B (M)	M2-15-3 Type A (M)	M2-15-1 Type C (M)
ARAS 14	M2-14-2 Type C 1 (M)	M2-14-4 Type B (M)	M2-14-6 Type B	M2-14-8 Type A1 (M)	M2-14-10 Type C (M)	M2-14-9 Type C	M2-14-7 Type B	M2-14-5 Type B (M)	M2-14-3 Type A (M)	M2-14-1 Type C (M)
ARAS 13	M2-13-2 Type C 1 (M)	M2-13-4 Type B (M)	M2-13-6 Type B	M2-13-8 Type A1 (M)	M2-13-10 Type C (M)	M2-13-9 Type C	M2-13-7 Type B	M2-13-5 Type B (M)	M2-13-3 Type A (M)	M2-13-1 Type C (M)
ARAS 12	M2-12-2 Type C 1 (M)	M2-12-4 Type B (M)	M2-12-6 Type B	M2-12-8 Type A1 (M)	M2-12-10 Type C (M)	M2-12-9 Type C	M2-12-7 Type B	M2-12-5 Type B (M)	M2-12-3 Type A (M)	M2-12-1 Type C (M)
ARAS 11	M2-11-2 Type C 1 (M)	M2-11-4 Type B (M)	M2-11-6 Type B	M2-11-8 Type A1 (M)	M2-11-10 Type C (M)	M2-11-9 Type C	M2-11-7 Type B	M2-11-5 Type B (M)	M2-11-3 Type A (M)	M2-11-1 Type C (M)
ARAS 10	M2-10-2 Type C 1 (M)	M2-10-4 Type B (M)	M2-10-6 Type B	M2-10-8 Type A1 (M)	M2-10-10 Type C (M)	M2-10-9 Type C	M2-10-7 Type B	M2-10-5 Type B (M)	M2-10-3 Type A (M)	M2-10-1 Type C (M)
ARAS 9	M2-9-2 Type C 1 (M)	M2-9-4 Type B (M)	M2-9-6 Type B	M2-9-8 Type A1 (M)	M2-9-10 Type C (M)	M2-9-9 Type C	M2-9-7 Type B	M2-9-5 Type B (M)	M2-9-3 Type A (M)	M2-9-1 Type C (M)
ARAS 8	M2-8-2 Type C 1 (M)	M2-8-4 Type B (M)	M2-8-6 Type B	M2-8-8 Type A1 (M)	M2-8-10 Type C (M)	M2-8-9 Type C	M2-8-7 Type B	M2-8-5 Type B (M)	M2-8-3 Type A (M)	M2-8-1 Type C (M)
ARAS 7	M2-7-2 Type C 1 (M)	M2-7-4 Type B (M)	M2-7-6 Type B	M2-7-8 Type A1 (M)	M2-7-10 Type C (M)	M2-7-9 Type C OKU (M)	M2-7-7 Type B	M2-7-5 Type B (M)	M2-7-3 Type A (M)	M2-7-1 Type C (M)
ARAS 6	M2-6-3 Type R 3		M2-6-2 Type R 2		M2-6-1 Type R 1					
ARAS 5	Podium Car parking level 5									
ARAS 4	Podium Car parking level 4									
ARAS 3	Podium Car parking level 3									
ARAS 2	Podium Car parking level 2									
ARAS 1	Podium Car parking level 1 / drop off entrance									



ARAS 7



ARAS 16



ARAS 8, 9, 10, 11, 12, 13, 14, 15, 17, 18, 19, 20, 21, 22, 23, 24, 25



RESIDENSI
**SEREMBAN
SENTRAL**

**PELAN TAPAK
BLOK 3**



ARAS	Unit 10	Unit 8	Unit 6	Unit 4	Unit 2	Unit 1	Unit 3	Unit 5	Unit 7	Unit 9
ARAS 25	M3-25-10 Type C	M3-25-8 Type A1	M3-25-6 Type B (M)	M3-25-4 Type B	M3-25-2 Type C 1	M3-25-1 Type C	M3-25-3 Type A	M3-25-5 Type B	M3-25-7 Type B (M)	M3-25-9 Type C (M)
ARAS 24	M3-24-10 Type C	M3-24-8 Type A1	M3-24-6 Type B (M)	M3-24-4 Type B	M3-24-2 Type C 1	M3-24-1 Type C	M3-24-3 Type A	M3-24-5 Type B	M3-24-7 Type B (M)	M3-24-9 Type C (M)
ARAS 23	M3-23-10 Type C	M3-23-8 Type A1	M3-23-6 Type B (M)	M3-23-4 Type B	M3-23-2 Type C 1	M3-23-1 Type C	M3-23-3 Type A	M3-23-5 Type B	M3-23-7 Type B (M)	M3-23-9 Type C (M)
ARAS 22	M3-22-10 Type C	M3-22-8 Type A1	M3-22-6 Type B (M)	M3-22-4 Type B	M3-22-2 Type C 1	M3-22-1 Type C	M3-22-3 Type A	M3-22-5 Type B	M3-22-7 Type B (M)	M3-22-9 Type C (M)
ARAS 21	M3-21-10 Type C	M3-21-8 Type A1	M3-21-6 Type B (M)	M3-21-4 Type B	M3-21-2 Type C 1	M3-21-1 Type C	M3-21-3 Type A	M3-21-5 Type B	M3-21-7 Type B (M)	M3-21-9 Type C (M)
ARAS 20	M3-20-10 Type C	M3-20-8 Type A1	M3-20-6 Type B (M)	M3-20-4 Type B	M3-20-2 Type C 1	M3-20-1 Type C	M3-20-3 Type A	M3-20-5 Type B	M3-20-7 Type B (M)	M3-20-9 Type C (M)
ARAS 19	M3-19-10 Type C	M3-19-8 Type A1	M3-19-6 Type B (M)	M3-19-4 Type B	M3-19-2 Type C 1	M3-19-1 Type C	M3-19-3 Type A	M3-19-5 Type B	M3-19-7 Type B (M)	M3-19-9 Type C (M)
ARAS 18	M3-18-10 Type C	M3-18-8 Type A1	M3-18-6 Type B (M)	M3-18-4 Type B	M3-18-2 Type C 1	M3-18-1 Type C	M3-18-3 Type A	M3-18-5 Type B	M3-18-7 Type B (M)	M3-18-9 Type C (M)
ARAS 17	M3-17-10 Type C	M3-17-8 Type A1	M3-17-6 Type B (M)	M3-17-4 Type B	M3-17-2 Type C 1	M3-17-1 Type C	M3-17-3 Type A	M3-17-5 Type B	M3-17-7 Type B (M)	M3-17-9 Type C (M)
ARAS 16	M3-16-10 Type C	M3-16-8 Type A1	M3-16-6 Type B (M)	M3-16-4 Type B	M3-16-2 Type C 1	M3-16-1 Type C	M3-16-3 Type A	water tank	sky garden	M3-16-9 Type C (M)
ARAS 15	M3-15-10 Type C	M3-15-8 Type A1	M3-15-6 Type B (M)	M3-15-4 Type B	M3-15-2 Type C 1	M3-15-1 Type C	M3-15-3 Type A	M3-15-5 Type B	M3-15-7 Type B (M)	M3-15-9 Type C (M)
ARAS 14	M3-14-10 Type C	M3-14-8 Type A1	M3-14-6 Type B (M)	M3-14-4 Type B	M3-14-2 Type C 1	M3-14-1 Type C	M3-14-3 Type A	M3-14-5 Type B	M3-14-7 Type B (M)	M3-14-9 Type C (M)
ARAS 13	M3-13-10 Type C	M3-13-8 Type A1	M3-13-6 Type B (M)	M3-13-4 Type B	M3-13-2 Type C 1	M3-13-1 Type C	M3-13-3 Type A	M3-13-5 Type B	M3-13-7 Type B (M)	M3-13-9 Type C (M)
ARAS 12	M3-12-10 Type C	M3-12-8 Type A1	M3-12-6 Type B (M)	M3-12-4 Type B	M3-12-2 Type C 1	M3-12-1 Type C	M3-12-3 Type A	M3-12-5 Type B	M3-12-7 Type B (M)	M3-12-9 Type C (M)
ARAS 11	M3-11-10 Type C	M3-11-8 Type A1	M3-11-6 Type B (M)	M3-11-4 Type B	M3-11-2 Type C 1	M3-11-1 Type C	M3-11-3 Type A	M3-11-5 Type B	M3-11-7 Type B (M)	M3-11-9 Type C (M)
ARAS 10	M3-10-10 Type C	M3-10-8 Type A1	M3-10-6 Type B (M)	M3-10-4 Type B	M3-10-2 Type C 1	M3-10-1 Type C	M3-10-3 Type A	M3-10-5 Type B	M3-10-7 Type B (M)	M3-10-9 Type C (M)
ARAS 9	M3-9-10 Type C	M3-9-8 Type A1	M3-9-6 Type B (M)	M3-9-4 Type B	M3-9-2 Type C 1	M3-9-1 Type C	M3-9-3 Type A	M3-9-5 Type B	M3-9-7 Type B (M)	M3-9-9 Type C (M)
ARAS 8	M3-8-10 Type C	M3-8-8 Type A1	M3-8-6 Type B (M)	M3-8-4 Type B	M3-8-2 Type C 1	M3-8-1 Type C	M3-8-3 Type A	M3-8-5 Type B	M3-8-7 Type B (M)	M3-8-9 Type C (M)
ARAS 7	M3-7-10 Type C	M3-7-8 Type A1	M3-7-6 Type B (M)	M3-7-4 Type B	M3-7-2 Type C 1	M3-7-1 Type C	M3-7-3 Type A	M3-7-5 Type B	M3-7-7 Type B (M)	M3-7-9 Type C OKU
ARAS 6	M3-6-6 Type R 6	M3-6-5 Type R 5		M3-6-4 Type R 4						
ARAS 5	Podium Car parking level 5									
ARAS 4	Podium Car parking level 4									
ARAS 3	Podium Car parking level 3									
ARAS 2	Podium Car parking level 2									
ARAS 1	Podium Car parking level 1 / drop off entrance									



ARAS 7



ARAS 16



ARAS 8, 9, 10, 11, 12, 13, 14, 15, 17, 18, 19, 20, 21, 22, 23, 24, 25



RESIDENSI
**SEREMBAN
SENTRAL**

**PELAN TAPAK
BLOK 4**



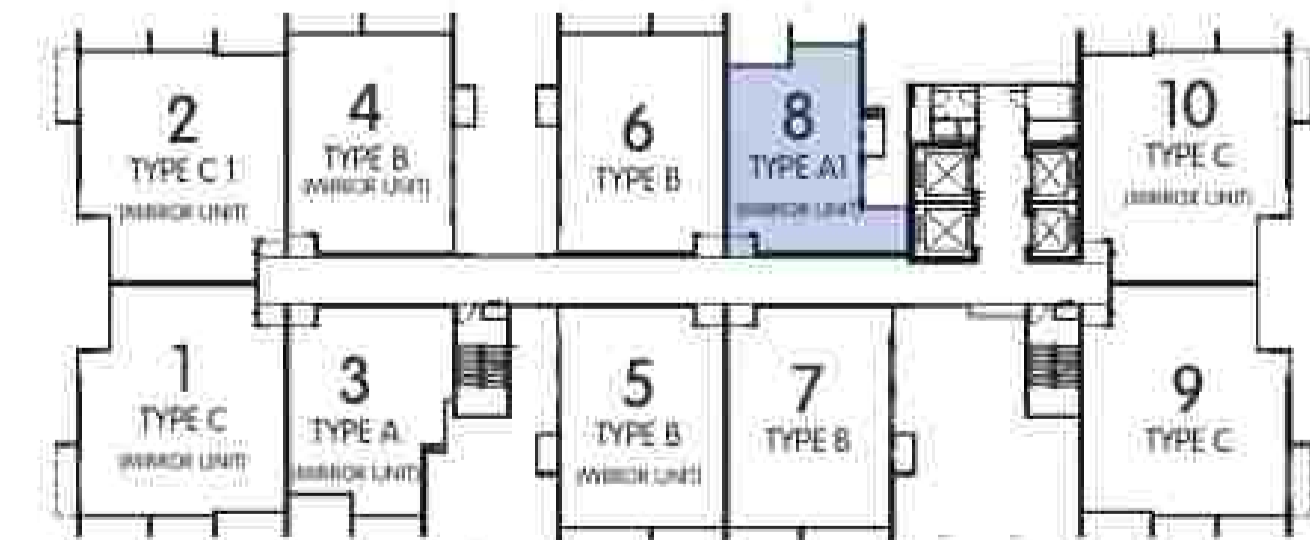
ARAS	Unit 2	Unit 4	Unit 6	Unit 8	Unit 10	Unit 9	Unit 7	Unit 5	Unit 3	Unit 1
ARAS 25	M4-25-2 Type C 1 (M)	M4-25-4 Type B (M)	M4-25-6 Type B	M4-25-8 Type A1 (M)	M4-25-10 Type C (M)	M4-25-9 Type C	M4-25-7 Type B	M4-25-5 Type B (M)	M4-25-3 Type A (M)	M4-25-1 Type C (M)
ARAS 24	M4-24-2 Type C 1 (M)	M4-24-4 Type B (M)	M4-24-6 Type B	M4-24-8 Type A1 (M)	M4-24-10 Type C (M)	M4-24-9 Type C	M4-24-7 Type B	M4-24-5 Type B (M)	M4-24-3 Type A (M)	M4-24-1 Type C (M)
ARAS 23	M4-23-2 Type C 1 (M)	M4-23-4 Type B (M)	M4-23-6 Type B	M4-23-8 Type A1 (M)	M4-23-10 Type C (M)	M4-23-9 Type C	M4-23-7 Type B	M4-23-5 Type B (M)	M4-23-3 Type A (M)	M4-23-1 Type C (M)
ARAS 22	M4-22-2 Type C 1 (M)	M4-22-4 Type B (M)	M4-22-6 Type B	M4-22-8 Type A1 (M)	M4-22-10 Type C (M)	M4-22-9 Type C	M4-22-7 Type B	M4-22-5 Type B (M)	M4-22-3 Type A (M)	M4-22-1 Type C (M)
ARAS 21	M4-21-2 Type C 1 (M)	M4-21-4 Type B (M)	M4-21-6 Type B	M4-21-8 Type A1 (M)	M4-21-10 Type C (M)	M4-21-9 Type C	M4-21-7 Type B	M4-21-5 Type B (M)	M4-21-3 Type A (M)	M4-21-1 Type C (M)
ARAS 20	M4-20-2 Type C 1 (M)	M4-20-4 Type B (M)	M4-20-6 Type B	M4-20-8 Type A1 (M)	M4-20-10 Type C (M)	M4-20-9 Type C	M4-20-7 Type B	M4-20-5 Type B (M)	M4-20-3 Type A (M)	M4-20-1 Type C (M)
ARAS 19	M4-19-2 Type C 1 (M)	M4-19-4 Type B (M)	M4-19-6 Type B	M4-19-8 Type A1 (M)	M4-19-10 Type C (M)	M4-19-9 Type C	M4-19-7 Type B	M4-19-5 Type B (M)	M4-19-3 Type A (M)	M4-19-1 Type C (M)
ARAS 18	M4-18-2 Type C 1 (M)	M4-18-4 Type B (M)	M4-18-6 Type B	M4-18-8 Type A1 (M)	M4-18-10 Type C (M)	M4-18-9 Type C	M4-18-7 Type B	M4-18-5 Type B (M)	M4-18-3 Type A (M)	M4-18-1 Type C (M)
ARAS 17	M4-17-2 Type C 1 (M)	M4-17-4 Type B (M)	M4-17-6 Type B	M4-17-8 Type A1 (M)	M4-17-10 Type C (M)	M4-17-9 Type C	M4-17-7 Type B	M4-17-5 Type B (M)	M4-17-3 Type A (M)	M4-17-1 Type C (M)
ARAS 16	M4-16-2 Type C 1 (M)	M4-16-4 Type B (M)	M4-16-6 Type B	M4-16-8 Type A1 (M)	M4-16-10 Type C (M)	M4-16-9 Type C	sky garden	water tank	M4-16-3 Type A (M)	M4-16-1 Type C (M)
ARAS 15	M4-15-2 Type C 1 (M)	M4-15-4 Type B (M)	M4-15-6 Type B	M4-15-8 Type A1 (M)	M4-15-10 Type C (M)	M4-15-9 Type C	M4-15-7 Type B	M4-15-5 Type B (M)	M4-15-3 Type A (M)	M4-15-1 Type C (M)
ARAS 14	M4-14-2 Type C 1 (M)	M4-14-4 Type B (M)	M4-14-6 Type B	M4-14-8 Type A1 (M)	M4-14-10 Type C (M)	M4-14-9 Type C	M4-14-7 Type B	M4-14-5 Type B (M)	M4-14-3 Type A (M)	M4-14-1 Type C (M)
ARAS 13	M4-13-2 Type C 1 (M)	M4-13-4 Type B (M)	M4-13-6 Type B	M4-13-8 Type A1 (M)	M4-13-10 Type C (M)	M4-13-9 Type C	M4-13-7 Type B	M4-13-5 Type B (M)	M4-13-3 Type A (M)	M4-13-1 Type C (M)
ARAS 12	M4-12-2 Type C 1 (M)	M4-12-4 Type B (M)	M4-12-6 Type B	M4-12-8 Type A1 (M)	M4-12-10 Type C (M)	M4-12-9 Type C	M4-12-7 Type B	M4-12-5 Type B (M)	M4-12-3 Type A (M)	M4-12-1 Type C (M)
ARAS 11	M4-11-2 Type C 1 (M)	M4-11-4 Type B (M)	M4-11-6 Type B	M4-11-8 Type A1 (M)	M4-11-10 Type C (M)	M4-11-9 Type C	M4-11-7 Type B	M4-11-5 Type B (M)	M4-11-3 Type A (M)	M4-11-1 Type C (M)
ARAS 10	M4-10-2 Type C 1 (M)	M4-10-4 Type B (M)	M4-10-6 Type B	M4-10-8 Type A1 (M)	M4-10-10 Type C (M)	M4-10-9 Type C	M4-10-7 Type B	M4-10-5 Type B (M)	M4-10-3 Type A (M)	M4-10-1 Type C (M)
ARAS 9	M4-9-2 Type C 1 (M)	M4-9-4 Type B (M)	M4-9-6 Type B	M4-9-8 Type A1 (M)	M4-9-10 Type C (M)	M4-9-9 Type C	M4-9-7 Type B	M4-9-5 Type B (M)	M4-9-3 Type A (M)	M4-9-1 Type C (M)
ARAS 8	M4-8-2 Type C 1 (M)	M4-8-4 Type B (M)	M4-8-6 Type B	M4-8-8 Type A1 (M)	M4-8-10 Type C (M)	M4-8-9 Type C	M4-8-7 Type B	M4-8-5 Type B (M)	M4-8-3 Type A (M)	M4-8-1 Type C (M)
ARAS 7	M4-7-2 Type C 1 (M)	M4-7-4 Type B (M)	M4-7-6 Type B	M4-7-8 Type A1 (M)	M4-7-10 Type C (M)	M4-7-9 Type C OKU (M)	M4-7-7 Type B	M4-7-5 Type B (M)	M4-7-3 Type A (M)	M4-7-1 Type C (M)
ARAS 6	M4-6-9 Type R 9		M4-6-8 Type R 8		M4-6-7 Type R 7					
ARAS 5	Podium Car parking level 5									
ARAS 4	Podium Car parking level 4									
ARAS 3	Podium Car parking level 3									
ARAS 2	Podium Car parking level 2									
ARAS 1	Podium Car parking level 1 / drop off entrance									



ARAS 7



ARAS 16



ARAS 8, 9, 10, 11, 12, 13, 14, 15, 17, 18, 19, 20, 21, 22, 23, 24, 25



RESIDENSI
**SEREMBAN
SENTRAL**

**PELAN TAPAK
BLOK 5**



ARAS	Unit 10	Unit 8	Unit 6	Unit 4	Unit 2	Unit 1	Unit 3	Unit 5	Unit 7	Unit 9
ARAS 25	M5-25-10 Type C	M5-25-8 Type A1	M5-25-6 Type B (M)	M5-25-4 Type B	M5-25-2 Type C 1	M5-25-1 Type C	M5-25-3 Type A	M5-25-5 Type B	M5-25-7 Type B (M)	M5-25-9 Type C (M)
ARAS 24	M5-24-10 Type C	M5-24-8 Type A1	M5-24-6 Type B (M)	M5-24-4 Type B	M5-24-2 Type C 1	M5-24-1 Type C	M5-24-3 Type A	M5-24-5 Type B	M5-24-7 Type B (M)	M5-24-9 Type C (M)
ARAS 23	M5-23-10 Type C	M5-23-8 Type A1	M5-23-6 Type B (M)	M5-23-4 Type B	M5-23-2 Type C 1	M5-23-1 Type C	M5-23-3 Type A	M5-23-5 Type B	M5-23-7 Type B (M)	M5-23-9 Type C (M)
ARAS 22	M5-22-10 Type C	M5-22-8 Type A1	M5-22-6 Type B (M)	M5-22-4 Type B	M5-22-2 Type C 1	M5-22-1 Type C	M5-22-3 Type A	M5-22-5 Type B	M5-22-7 Type B (M)	M5-22-9 Type C (M)
ARAS 21	M5-21-10 Type C	M5-21-8 Type A1	M5-21-6 Type B (M)	M5-21-4 Type B	M5-21-2 Type C 1	M5-21-1 Type C	M5-21-3 Type A	M5-21-5 Type B	M5-21-7 Type B (M)	M5-21-9 Type C (M)
ARAS 20	M5-20-10 Type C	M5-20-8 Type A1	M5-20-6 Type B (M)	M5-20-4 Type B	M5-20-2 Type C 1	M5-20-1 Type C	M5-20-3 Type A	M5-20-5 Type B	M5-20-7 Type B (M)	M5-20-9 Type C (M)
ARAS 19	M5-19-10 Type C	M5-19-8 Type A1	M5-19-6 Type B (M)	M5-19-4 Type B	M5-19-2 Type C 1	M5-19-1 Type C	M5-19-3 Type A	M5-19-5 Type B	M5-19-7 Type B (M)	M5-19-9 Type C (M)
ARAS 18	M5-18-10 Type C	M5-18-8 Type A1	M5-18-6 Type B (M)	M5-18-4 Type B	M5-18-2 Type C 1	M5-18-1 Type C	M5-18-3 Type A	M5-18-5 Type B	M5-18-7 Type B (M)	M5-18-9 Type C (M)
ARAS 17	M5-17-10 Type C	M5-17-8 Type A1	M5-17-6 Type B (M)	M5-17-4 Type B	M5-17-2 Type C 1	M5-17-1 Type C	M5-17-3 Type A	M5-17-5 Type B	M5-17-7 Type B (M)	M5-17-9 Type C (M)
ARAS 16	M5-16-10 Type C	M5-16-8 Type A1	M5-16-6 Type B (M)	M5-16-4 Type B	M5-16-2 Type C 1	M5-16-1 Type C	M5-16-3 Type A	water tank	sky garden	M5-16-9 Type C (M)
ARAS 15	M5-15-10 Type C	M5-15-8 Type A1	M5-15-6 Type B (M)	M5-15-4 Type B	M5-15-2 Type C 1	M5-15-1 Type C	M5-15-3 Type A	M5-15-5 Type B	M5-15-7 Type B (M)	M5-15-9 Type C (M)
ARAS 14	M5-14-10 Type C	M5-14-8 Type A1	M5-14-6 Type B (M)	M5-14-4 Type B	M5-14-2 Type C 1	M5-14-1 Type C	M5-14-3 Type A	M5-14-5 Type B	M5-14-7 Type B (M)	M5-14-9 Type C (M)
ARAS 13	M5-13-10 Type C	M5-13-8 Type A1	M5-13-6 Type B (M)	M5-13-4 Type B	M5-13-2 Type C 1	M5-13-1 Type C	M5-13-3 Type A	M5-13-5 Type B	M5-13-7 Type B (M)	M5-13-9 Type C (M)
ARAS 12	M5-12-10 Type C	M5-12-8 Type A1	M5-12-6 Type B (M)	M5-12-4 Type B	M5-12-2 Type C 1	M5-12-1 Type C	M5-12-3 Type A	M5-12-5 Type B	M5-12-7 Type B (M)	M5-12-9 Type C (M)
ARAS 11	M5-11-10 Type C	M5-11-8 Type A1	M5-11-6 Type B (M)	M5-11-4 Type B	M5-11-2 Type C 1	M5-11-1 Type C	M5-11-3 Type A	M5-11-5 Type B	M5-11-7 Type B (M)	M5-11-9 Type C (M)
ARAS 10	M5-10-10 Type C	M5-10-8 Type A1	M5-10-6 Type B (M)	M5-10-4 Type B	M5-10-2 Type C 1	M5-10-1 Type C	M5-10-3 Type A	M5-10-5 Type B	M5-10-7 Type B (M)	M5-10-9 Type C (M)
ARAS 9	M5-9-10 Type C	M5-9-8 Type A1	M5-9-6 Type B (M)	M5-9-4 Type B	M5-9-2 Type C 1	M5-9-1 Type C	M5-9-3 Type A	M5-9-5 Type B	M5-9-7 Type B (M)	M5-9-9 Type C (M)
ARAS 8	M5-8-10 Type C	M5-8-8 Type A1	M5-8-6 Type B (M)	M5-8-4 Type B	M5-8-2 Type C 1	M5-8-1 Type C	M5-8-3 Type A	M5-8-5 Type B	M5-8-7 Type B (M)	M5-8-9 Type C (M)
ARAS 7	M5-7-10 Type C	M5-7-8 Type A1	M5-7-6 Type B (M)	M5-7-4 Type B	M5-7-2 Type C 1	M5-7-1 Type C	M5-7-3 Type A	M5-7-5 Type B	M5-7-7 Type B (M)	M5-7-9 Type C (M)
ARAS 6	M5-6-10 Type R.10	Facilities		Facilities						
ARAS 5	Podium Car parking level 5									
ARAS 4	Podium Car parking level 4									
ARAS 3	Podium Car parking level 3									
ARAS 2	Podium Car parking level 2 / drop off entrance									
ARAS 1	Podium Car parking level 1									



ARAS 7



ARAS 16



ARAS 8, 9, 10, 11, 12, 13, 14, 15, 17, 18, 19, 20, 21, 22, 23, 24, 25



RESIDENSI
SEREMBAN
SENTRAL

PELAN TAPAK
BLOK 6

PETUNJUK

- 2 RUANG PARKIR (BERSEBELAHAN)
- 2 RUANG PARKIR (TANDEM)
- 1 RUANG PARKIR

ARAS	Unit 2	Unit 4	Unit 6	Unit 8	Unit 10	Unit 9	Unit 7	Unit 5	Unit 3	Unit 1
ARAS 25	M6-25-2 Type C 1 (M)	M6-25-4 Type B (M)	M6-25-6 Type B	M6-25-8 Type A1 (M)	M6-25-10 Type C (M)	M6-25-9 Type C	M6-25-7 Type B	M6-25-5 Type B (M)	M6-25-3 Type A (M)	M6-25-1 Type C (M)
ARAS 24	M6-24-2 Type C 1 (M)	M6-24-4 Type B (M)	M6-24-6 Type B	M6-24-8 Type A1 (M)	M6-24-10 Type C (M)	M6-24-9 Type C	M6-24-7 Type B	M6-24-5 Type B (M)	M6-24-3 Type A (M)	M6-24-1 Type C (M)
ARAS 23	M6-23-2 Type C 1 (M)	M6-23-4 Type B (M)	M6-23-6 Type B	M6-23-8 Type A1 (M)	M6-23-10 Type C (M)	M6-23-9 Type C	M6-23-7 Type B	M6-23-5 Type B (M)	M6-23-3 Type A (M)	M6-23-1 Type C (M)
ARAS 22	M6-22-2 Type C 1 (M)	M6-22-4 Type B (M)	M6-22-6 Type B	M6-22-8 Type A1 (M)	M6-22-10 Type C (M)	M6-22-9 Type C	M6-22-7 Type B	M6-22-5 Type B (M)	M6-22-3 Type A (M)	M6-22-1 Type C (M)
ARAS 21	M6-21-2 Type C 1 (M)	M6-21-4 Type B (M)	M6-21-6 Type B	M6-21-8 Type A1 (M)	M6-21-10 Type C (M)	M6-21-9 Type C	M6-21-7 Type B	M6-21-5 Type B (M)	M6-21-3 Type A (M)	M6-21-1 Type C (M)
ARAS 20	M6-20-2 Type C 1 (M)	M6-20-4 Type B (M)	M6-20-6 Type B	M6-20-8 Type A1 (M)	M6-20-10 Type C (M)	M6-20-9 Type C	M6-20-7 Type B	M6-20-5 Type B (M)	M6-20-3 Type A (M)	M6-20-1 Type C (M)
ARAS 19	M6-19-2 Type C 1 (M)	M6-19-4 Type B (M)	M6-19-6 Type B	M6-19-8 Type A1 (M)	M6-19-10 Type C (M)	M6-19-9 Type C	M6-19-7 Type B	M6-19-5 Type B (M)	M6-19-3 Type A (M)	M6-19-1 Type C (M)
ARAS 18	M6-18-2 Type C 1 (M)	M6-18-4 Type B (M)	M6-18-6 Type B	M6-18-8 Type A1 (M)	M6-18-10 Type C (M)	M6-18-9 Type C	M6-18-7 Type B	M6-18-5 Type B (M)	M6-18-3 Type A (M)	M6-18-1 Type C (M)
ARAS 17	M6-17-2 Type C 1 (M)	M6-17-4 Type B (M)	M6-17-6 Type B	M6-17-8 Type A1 (M)	M6-17-10 Type C (M)	M6-17-9 Type C	M6-17-7 Type B	M6-17-5 Type B (M)	M6-17-3 Type A (M)	M6-17-1 Type C (M)
ARAS 16	M6-16-2 Type C 1 (M)	M6-16-4 Type B (M)	M6-16-6 Type B	M6-16-8 Type A1 (M)	M6-16-10 Type C (M)	M6-16-9 Type C	sky garden	water tank	M6-16-3 Type A (M)	M6-16-1 Type C (M)
ARAS 15	M6-15-2 Type C 1 (M)	M6-15-4 Type B (M)	M6-15-6 Type B	M6-15-8 Type A1 (M)	M6-15-10 Type C (M)	M6-15-9 Type C	M6-15-7 Type B	M6-15-5 Type B (M)	M6-15-3 Type A (M)	M6-15-1 Type C (M)
ARAS 14	M6-14-2 Type C 1 (M)	M6-14-4 Type B (M)	M6-14-6 Type B	M6-14-8 Type A1 (M)	M6-14-10 Type C (M)	M6-14-9 Type C	M6-14-7 Type B	M6-14-5 Type B (M)	M6-14-3 Type A (M)	M6-14-1 Type C (M)
ARAS 13	M6-13-2 Type C 1 (M)	M6-13-4 Type B (M)	M6-13-6 Type B	M6-13-8 Type A1 (M)	M6-13-10 Type C (M)	M6-13-9 Type C	M6-13-7 Type B	M6-13-5 Type B (M)	M6-13-3 Type A (M)	M6-13-1 Type C (M)
ARAS 12	M6-12-2 Type C 1 (M)	M6-12-4 Type B (M)	M6-12-6 Type B	M6-12-8 Type A1 (M)	M6-12-10 Type C (M)	M6-12-9 Type C	M6-12-7 Type B	M6-12-5 Type B (M)	M6-12-3 Type A (M)	M6-12-1 Type C (M)
ARAS 11	M6-11-2 Type C 1 (M)	M6-11-4 Type B (M)	M6-11-6 Type B	M6-11-8 Type A1 (M)	M6-11-10 Type C (M)	M6-11-9 Type C	M6-11-7 Type B	M6-11-5 Type B (M)	M6-11-3 Type A (M)	M6-11-1 Type C (M)
ARAS 10	M6-10-2 Type C 1 (M)	M6-10-4 Type B (M)	M6-10-6 Type B	M6-10-8 Type A1 (M)	M6-10-10 Type C (M)	M6-10-9 Type C	M6-10-7 Type B	M6-10-5 Type B (M)	M6-10-3 Type A (M)	M6-10-1 Type C (M)
ARAS 9	M6-9-2 Type C 1 (M)	M6-9-4 Type B (M)	M6-9-6 Type B	M6-9-8 Type A1 (M)	M6-9-10 Type C (M)	M6-9-9 Type C	M6-9-7 Type B	M6-9-5 Type B (M)	M6-9-3 Type A (M)	M6-9-1 Type C (M)
ARAS 8	M6-8-2 Type C 1 (M)	M6-8-4 Type B (M)	M6-8-6 Type B	M6-8-8 Type A1 (M)	M6-8-10 Type C (M)	M6-8-9 Type C	M6-8-7 Type B	M6-8-5 Type B (M)	M6-8-3 Type A (M)	M6-8-1 Type C (M)
ARAS 7	M6-7-2 Type C 1 (M)	M6-7-4 Type B (M)	M6-7-6 Type B	M6-7-8 Type A1 (M)	M6-7-10 Type C (M)	M6-7-9 Type C OKU (M)	M6-7-7 Type B	M6-7-5 Type B (M)	M6-7-3 Type A (M)	M6-7-1 Type C (M)
ARAS 6	Facilities									
ARAS 5	Podium Car parking level 5									
ARAS 4	Podium Car parking level 4									
ARAS 3	Podium Car parking level 3									
ARAS 2	Podium Car parking level 2 / drop off entrance									
ARAS 1	Podium Car parking level 1									



ARAS 7



ARAS 16



ARAS 8, 9, 10, 11, 12, 13, 14, 15, 17, 18, 19, 20, 21, 22, 23, 24, 25



RESIDENSI
**SEREMBAN
SENTRAL**

**PELAN TAPAK
BLOK 7**

PETUNJUK

- 2 RUANG PARKIR (BERSEBELAHAN)
- 2 RUANG PARKIR (TANDEM)
- 1 RUANG PARKIR

ARAS	Unit 10	Unit 8	Unit 6	Unit 4	Unit 2	Unit 1	Unit 3	Unit 5	Unit 7	Unit 9
ARAS 25	M7-25-10 Type C	M7-25-8 Type A1	M7-25-6 Type B (M)	M7-25-4 Type B	M7-25-2 Type C1	M7-25-1 Type C	M7-25-3 Type A	M7-25-5 Type B	M7-25-7 Type B (M)	M7-25-9 Type C (M)
ARAS 24	M7-24-10 Type C	M7-24-8 Type A1	M7-24-6 Type B (M)	M7-24-4 Type B	M7-24-2 Type C1	M7-24-1 Type C	M7-24-3 Type A	M7-24-5 Type B	M7-24-7 Type B (M)	M7-24-9 Type C (M)
ARAS 23	M7-23-10 Type C	M7-23-8 Type A1	M7-23-6 Type B (M)	M7-23-4 Type B	M7-23-2 Type C1	M7-23-1 Type C	M7-23-3 Type A	M7-23-5 Type B	M7-23-7 Type B (M)	M7-23-9 Type C (M)
ARAS 22	M7-22-10 Type C	M7-22-8 Type A1	M7-22-6 Type B (M)	M7-22-4 Type B	M7-22-2 Type C1	M7-22-1 Type C	M7-22-3 Type A	M7-22-5 Type B	M7-22-7 Type B (M)	M7-22-9 Type C (M)
ARAS 21	M7-21-10 Type C	M7-21-8 Type A1	M7-21-6 Type B (M)	M7-21-4 Type B	M7-21-2 Type C1	M7-21-1 Type C	M7-21-3 Type A	M7-21-5 Type B	M7-21-7 Type B (M)	M7-21-9 Type C (M)
ARAS 20	M7-20-10 Type C	M7-20-8 Type A1	M7-20-6 Type B (M)	M7-20-4 Type B	M7-20-2 Type C1	M7-20-1 Type C	M7-20-3 Type A	M7-20-5 Type B	M7-20-7 Type B (M)	M7-20-9 Type C (M)
ARAS 19	M7-19-10 Type C	M7-19-8 Type A1	M7-19-6 Type B (M)	M7-19-4 Type B	M7-19-2 Type C1	M7-19-1 Type C	M7-19-3 Type A	M7-19-5 Type B	M7-19-7 Type B (M)	M7-19-9 Type C (M)
ARAS 18	M7-18-10 Type C	M7-18-8 Type A1	M7-18-6 Type B (M)	M7-18-4 Type B	M7-18-2 Type C1	M7-18-1 Type C	M7-18-3 Type A	M7-18-5 Type B	M7-18-7 Type B (M)	M7-18-9 Type C (M)
ARAS 17	M7-17-10 Type C	M7-17-8 Type A1	M7-17-6 Type B (M)	M7-17-4 Type B	M7-17-2 Type C1	M7-17-1 Type C	M7-17-3 Type A	M7-17-5 Type B	M7-17-7 Type B (M)	M7-17-9 Type C (M)
ARAS 16	M7-16-10 Type C	M7-16-8 Type A1	M7-16-6 Type B (M)	M7-16-4 Type B	M7-16-2 Type C1	M7-16-1 Type C	M7-16-3 Type A	water tank	sky garden	M7-16-9 Type C (M)
ARAS 15	M7-15-10 Type C	M7-15-8 Type A1	M7-15-6 Type B (M)	M7-15-4 Type B	M7-15-2 Type C1	M7-15-1 Type C	M7-15-3 Type A	M7-15-5 Type B	M7-15-7 Type B (M)	M7-15-9 Type C (M)
ARAS 14	M7-14-10 Type C	M7-14-8 Type A1	M7-14-6 Type B (M)	M7-14-4 Type B	M7-14-2 Type C1	M7-14-1 Type C	M7-14-3 Type A	M7-14-5 Type B	M7-14-7 Type B (M)	M7-14-9 Type C (M)
ARAS 13	M7-13-10 Type C	M7-13-8 Type A1	M7-13-6 Type B (M)	M7-13-4 Type B	M7-13-2 Type C1	M7-13-1 Type C	M7-13-3 Type A	M7-13-5 Type B	M7-13-7 Type B (M)	M7-13-9 Type C (M)
ARAS 12	M7-12-10 Type C	M7-12-8 Type A1	M7-12-6 Type B (M)	M7-12-4 Type B	M7-12-2 Type C1	M7-12-1 Type C	M7-12-3 Type A	M7-12-5 Type B	M7-12-7 Type B (M)	M7-12-9 Type C (M)
ARAS 11	M7-11-10 Type C	M7-11-8 Type A1	M7-11-6 Type B (M)	M7-11-4 Type B	M7-11-2 Type C1	M7-11-1 Type C	M7-11-3 Type A	M7-11-5 Type B	M7-11-7 Type B (M)	M7-11-9 Type C (M)
ARAS 10	M7-10-10 Type C	M7-10-8 Type A1	M7-10-6 Type B (M)	M7-10-4 Type B	M7-10-2 Type C1	M7-10-1 Type C	M7-10-3 Type A	M7-10-5 Type B	M7-10-7 Type B (M)	M7-10-9 Type C (M)
ARAS 9	M7-9-10 Type C	M7-9-8 Type A1	M7-9-6 Type B (M)	M7-9-4 Type B	M7-9-2 Type C1	M7-9-1 Type C	M7-9-3 Type A	M7-9-5 Type B	M7-9-7 Type B (M)	M7-9-9 Type C (M)
ARAS 8	M7-8-10 Type C	M7-8-8 Type A1	M7-8-6 Type B (M)	M7-8-4 Type B	M7-8-2 Type C1	M7-8-1 Type C	M7-8-3 Type A	M7-8-5 Type B	M7-8-7 Type B (M)	M7-8-9 Type C (M)
ARAS 7	M7-7-10 Type C	M7-7-8 Type A1	M7-7-6 Type B (M)	M7-7-4 Type B	M7-7-2 Type C1	M7-7-1 Type C	M7-7-3 Type A	M7-7-5 Type B	M7-7-7 Type B (M)	M7-7-9 Type C OKU
ARAS 6	Facilities									
ARAS 5	Podium Car parking level 5									
ARAS 4	Podium Car parking level 4 / drop off entrance									
ARAS 3	Podium Car parking level 3									
ARAS 2	Podium Car parking level 2									
ARAS 1	Podium Car parking level 1									



ARAS 7



ARAS 16



ARAS 8, 9, 10, 11, 12, 13, 14, 15, 17, 18, 19, 20, 21, 22, 23, 24, 25



RESIDENSI
**SEREMBAN
SENTRAL**

**PELAN TAPAK
BLOK 8**

PETUNJUK

- 2 RUANG PARKIR (BERSEBELAHAN)
- 2 RUANG PARKIR (TANDEM)
- 1 RUANG PARKIR

ARAS	Unit 2	Unit 4	Unit 6	Unit 8	Unit 10	Unit 9	Unit 7	Unit 5	Unit 3	Unit 1
ARAS 25	M8-25-2 Type C1 (M)	M8-25-4 Type B (M)	M8-25-6 Type B	M8-25-8 Type A1 (M)	M8-25-10 Type C (M)	M8-25-9 Type C	M8-25-7 Type B	M8-25-5 Type B (M)	M8-25-3 Type A (M)	M8-25-1 Type C (M)
ARAS 24	M8-24-2 Type C1 (M)	M8-24-4 Type B (M)	M8-24-6 Type B	M8-24-8 Type A1 (M)	M8-24-10 Type C (M)	M8-24-9 Type C	M8-24-7 Type B	M8-24-5 Type B (M)	M8-24-3 Type A (M)	M8-24-1 Type C (M)
ARAS 23	M8-23-2 Type C1 (M)	M8-23-4 Type B (M)	M8-23-6 Type B	M8-23-8 Type A1 (M)	M8-23-10 Type C (M)	M8-23-9 Type C	M8-23-7 Type B	M8-23-5 Type B (M)	M8-23-3 Type A (M)	M8-23-1 Type C (M)
ARAS 22	M8-22-2 Type C1 (M)	M8-22-4 Type B (M)	M8-22-6 Type B	M8-22-8 Type A1 (M)	M8-22-10 Type C (M)	M8-22-9 Type C	M8-22-7 Type B	M8-22-5 Type B (M)	M8-22-3 Type A (M)	M8-22-1 Type C (M)
ARAS 21	M8-21-2 Type C1 (M)	M8-21-4 Type B (M)	M8-21-6 Type B	M8-21-8 Type A1 (M)	M8-21-10 Type C (M)	M8-21-9 Type C	M8-21-7 Type B	M8-21-5 Type B (M)	M8-21-3 Type A (M)	M8-21-1 Type C (M)
ARAS 20	M8-20-2 Type C1 (M)	M8-20-4 Type B (M)	M8-20-6 Type B	M8-20-8 Type A1 (M)	M8-20-10 Type C (M)	M8-20-9 Type C	M8-20-7 Type B	M8-20-5 Type B (M)	M8-20-3 Type A (M)	M8-20-1 Type C (M)
ARAS 19	M8-19-2 Type C1 (M)	M8-19-4 Type B (M)	M8-19-6 Type B	M8-19-8 Type A1 (M)	M8-19-10 Type C (M)	M8-19-9 Type C	M8-19-7 Type B	M8-19-5 Type B (M)	M8-19-3 Type A (M)	M8-19-1 Type C (M)
ARAS 18	M8-18-2 Type C1 (M)	M8-18-4 Type B (M)	M8-18-6 Type B	M8-18-8 Type A1 (M)	M8-18-10 Type C (M)	M8-18-9 Type C	M8-18-7 Type B	M8-18-5 Type B (M)	M8-18-3 Type A (M)	M8-18-1 Type C (M)
ARAS 17	M8-17-2 Type C1 (M)	M8-17-4 Type B (M)	M8-17-6 Type B	M8-17-8 Type A1 (M)	M8-17-10 Type C (M)	M8-17-9 Type C	M8-17-7 Type B	M8-17-5 Type B (M)	M8-17-3 Type A (M)	M8-17-1 Type C (M)
ARAS 16	M8-16-2 Type C1 (M)	M8-16-4 Type B (M)	M8-16-6 Type B	M8-16-8 Type A1 (M)	M8-16-10 Type C (M)	M8-16-9 Type C	sky garden	water tank	M8-16-3 Type A (M)	M8-16-1 Type C (M)
ARAS 15	M8-15-2 Type C1 (M)	M8-15-4 Type B (M)	M8-15-6 Type B	M8-15-8 Type A1 (M)	M8-15-10 Type C (M)	M8-15-9 Type C	M8-15-7 Type B	M8-15-5 Type B (M)	M8-15-3 Type A (M)	M8-15-1 Type C (M)
ARAS 14	M8-14-2 Type C1 (M)	M8-14-4 Type B (M)	M8-14-6 Type B	M8-14-8 Type A1 (M)	M8-14-10 Type C (M)	M8-14-9 Type C	M8-14-7 Type B	M8-14-5 Type B (M)	M8-14-3 Type A (M)	M8-14-1 Type C (M)
ARAS 13	M8-13-2 Type C1 (M)	M8-13-4 Type B (M)	M8-13-6 Type B	M8-13-8 Type A1 (M)	M8-13-10 Type C (M)	M8-13-9 Type C	M8-13-7 Type B	M8-13-5 Type B (M)	M8-13-3 Type A (M)	M8-13-1 Type C (M)
ARAS 12	M8-12-2 Type C1 (M)	M8-12-4 Type B (M)	M8-12-6 Type B	M8-12-8 Type A1 (M)	M8-12-10 Type C (M)	M8-12-9 Type C	M8-12-7 Type B	M8-12-5 Type B (M)	M8-12-3 Type A (M)	M8-12-1 Type C (M)
ARAS 11	M8-11-2 Type C1 (M)	M8-11-4 Type B (M)	M8-11-6 Type B	M8-11-8 Type A1 (M)	M8-11-10 Type C (M)	M8-11-9 Type C	M8-11-7 Type B	M8-11-5 Type B (M)	M8-11-3 Type A (M)	M8-11-1 Type C (M)
ARAS 10	M8-10-2 Type C1 (M)	M8-10-4 Type B (M)	M8-10-6 Type B	M8-10-8 Type A1 (M)	M8-10-10 Type C (M)	M8-10-9 Type C	M8-10-7 Type B	M8-10-5 Type B (M)	M8-10-3 Type A (M)	M8-10-1 Type C (M)
ARAS 9	M8-9-2 Type C1 (M)	M8-9-4 Type B (M)	M8-9-6 Type B	M8-9-8 Type A1 (M)	M8-9-10 Type C (M)	M8-9-9 Type C	M8-9-7 Type B	M8-9-5 Type B (M)	M8-9-3 Type A (M)	M8-9-1 Type C (M)
ARAS 8	M8-8-2 Type C1 (M)	M8-8-4 Type B (M)	M8-8-6 Type B	M8-8-8 Type A1 (M)	M8-8-10 Type C (M)	M8-8-9 Type C	M8-8-7 Type B	M8-8-5 Type B (M)	M8-8-3 Type A (M)	M8-8-1 Type C (M)
ARAS 7	M8-7-2 Type C1 (M)	M8-7-4 Type B (M)	M8-7-6 Type B	M8-7-8 Type A1 (M)	M8-7-10 Type C (M)	M8-7-9 Type C OKU (M)	M8-7-7 Type B	M8-7-5 Type B (M)	M8-7-3 Type A (M)	M8-7-1 Type C (M)
ARAS 6	Facilities									
ARAS 5	Podium Car parking level 5									
ARAS 4	Podium Car parking level 4 / drop off entrance									
ARAS 3	Podium Car parking level 3									
ARAS 2	Podium Car parking level 2									
ARAS 1	Podium Car parking level 1									



ARAS 7



ARAS 16



ARAS 8, 9, 10, 11, 12, 13, 14, 15, 17, 18, 19, 20, 21, 22, 23, 24, 25